



Apache

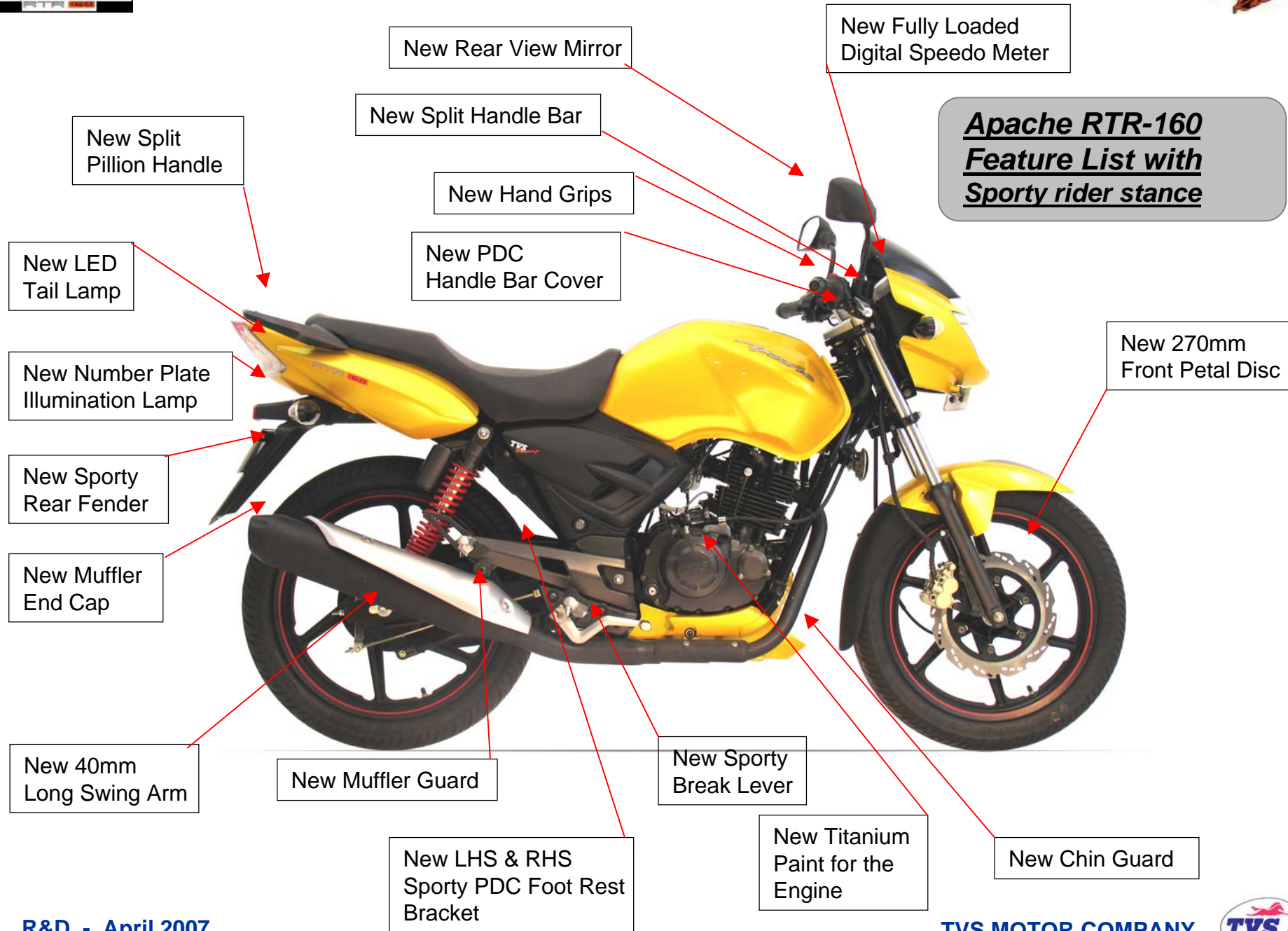
RTR 160

From the

Racing heritage of TVS



#	Date	Event	Place	Position
1	25.02.2006	Auto car Speed rurag meet 2006	Mumbai	Won 1 st place
2	22.04.2006	Auto car Speed run drag meet 2006	Bangalore	Won 2 nd place
3	16.07.2006	Ucal Rolon National Road racing c' ship 2006 leg 3	Coimbatore	Won 1 st , 2 nd place
4	03.09.2006	Ucal Rolon National Road racing c' ship 2006 leg 4	Chennai	Won 1 st , 2 nd & 3 rd place
5	17.09.2006	Ucal Rolon National Road racing c' ship 2006 leg 5	Chennai	Won 1 st , 2 nd & 3 rd place
6	17.09.2006	Gulf dirt track National Championship 2006 leg 3	Raipur	Won 1 st & 2 nd place
7	08.10.2006	MRF National Supercross Championship 2006 leg 3	Coimbatore	Won 1 st , 2 nd place
8	29.10.2006	MRF National Supercross Championship 2006 leg 4	Goa	Won 1 st place
9	12.11.2006	Gulf dirt track National Championship 2006 leg 4	Nashik	Won 1 st , 2 nd place
10	03.12.2006	Ucal Rolon National Road racing c' ship 2006 leg 6	Chennai	Won 1 st , 2 nd & 3 rd place
11	10.12.2006	Gulf dirt track National Championship 2006 leg 5	Jodhpur	Won 1 st , 2 nd place
12	17.12.2006	MRF National Supercross Championship 2006 leg 5	Kolhapur	Won 1 st place
13	28.01.2007	Rolon Endurance 2007	Coimbatore	Won 1 st , 2 nd & 3 rd place
14	18.02.2007	Auto car Speed run drag meet 2007	Mumbai	Won 1 st place



New Rear View Mirror

New Fully Loaded Digital Speedo Meter

Apache RTR-160
Feature List with
Sporty rider stance

New Split Handle Bar

New Split Pillion Handle

New Hand Grips

New PDC Handle Bar Cover

New LED Tail Lamp

New Number Plate Illumination Lamp

New 270mm Front Petal Disc

New Sporty Rear Fender

New Muffler End Cap

New 40mm Long Swing Arm

New Muffler Guard

New Sporty Break Lever

New LHS & RHS Sporty PDC Foot Rest Bracket

New Titanium Paint for the Engine

New Chin Guard

All New Techno look digital speedometer with the analog rpm meter in the right side as seen on the International sport's bikes.



LCD Panel with Speed, fuel, Clock, ODO, Trip A & Trip B On display with amber back lit in the night.

Rpm dial with Racing strip on the dial art And TVS Racing logo



Twin triangular LED tail lamp with integrated REFLEX reflector



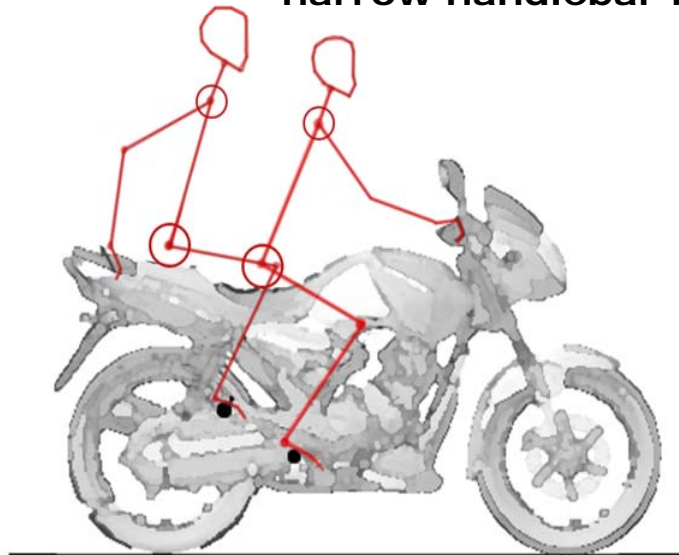
Sporty Ergonomic Stance for the Rider:

The Sporty ergonomic riding position,
slightly forward balanced,

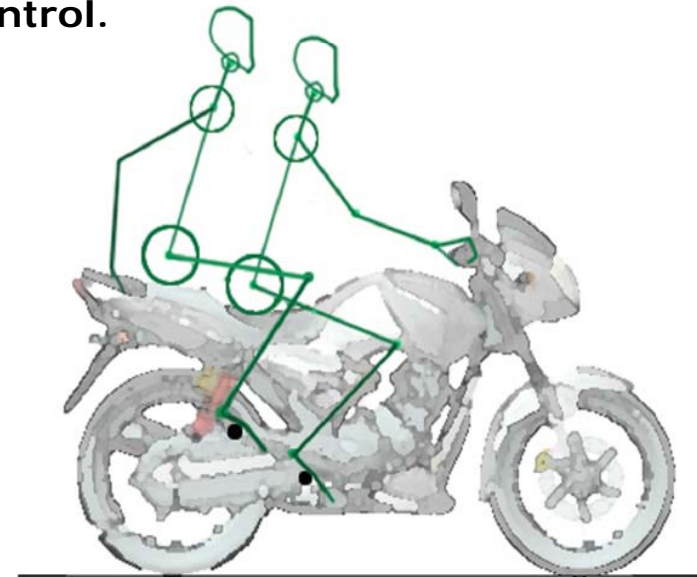
guaranteed to deliver a great thrill and get your
adrenalin up!

Exceptional maneuverability

is assured by the raised foot pegs
to bend at the highest angle and
narrow handlebar for complete control.



50th Percentile mannequin (Height-5'6")



95th Percentile mannequin (Height-5'10")



Racing Throttle Response

***Apache RTR-160
available in 5 choices of color***

Aggressive in RED

Brilliant in YELLOW

Elegant in BLACK

Stunning in SILVER

Explosive stealth in TITANIUM

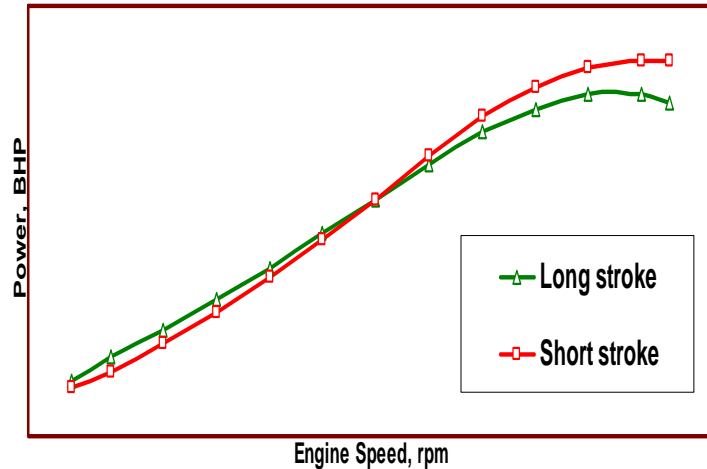


Apache

RTR 160

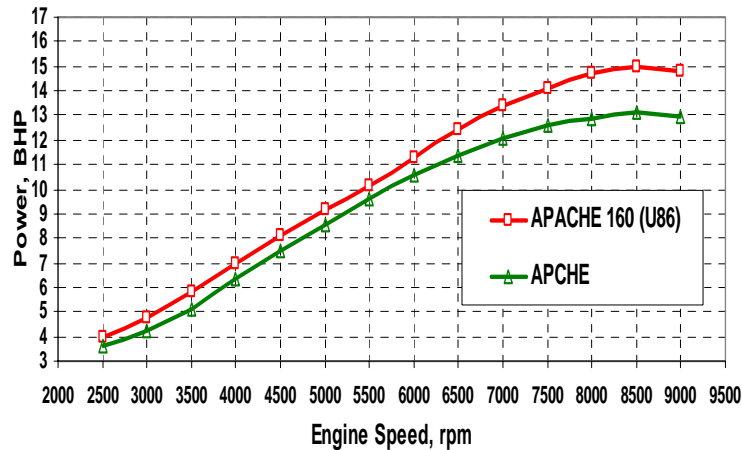
Racing Engine

Short stroke –High rev engine



How it works

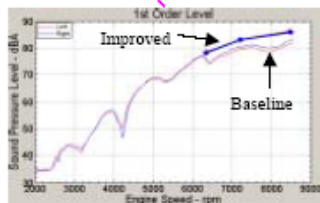
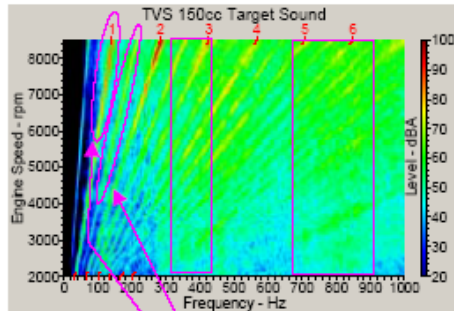
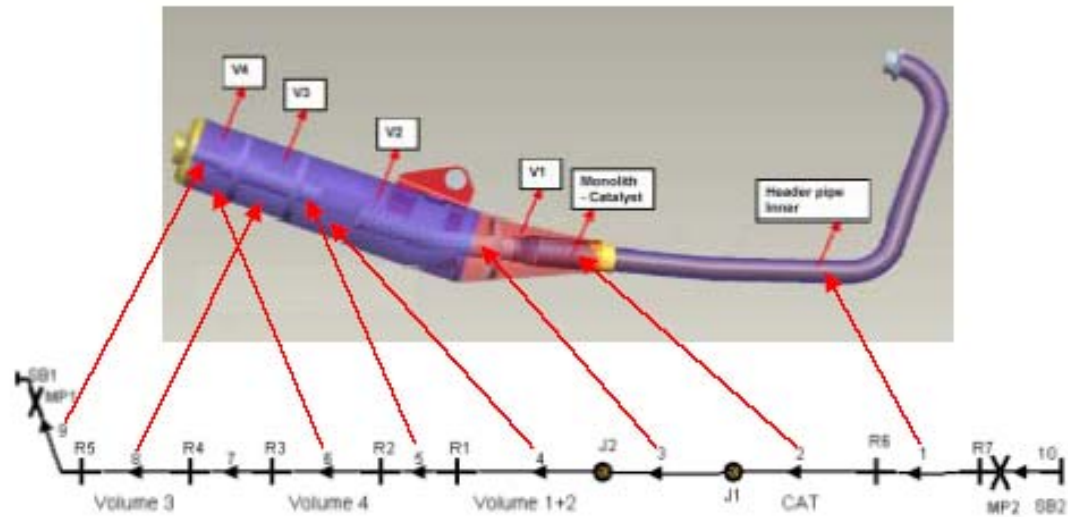
- Higher the engine rpm more is the power delivery.
- Longer stroke engine limits the piston speed, engine does not rev beyond certain rpm
- Shorter stroke engine with 160cc



Benefits to Customer

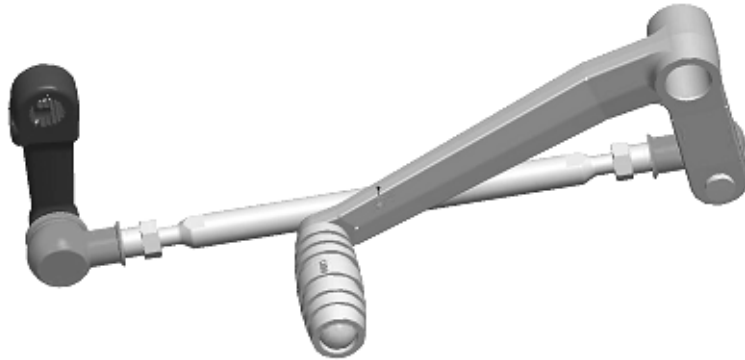
- Race type engine makes the throttle response better.
- Highest power to weight ratio

Apache RTR : Powerful Sound Quality



	Apache150	Apache RTR160
Pipe No	Diameter(mm)	Diameter(mm)
P1	23	30
P2	33	33
P3	30	35
P4	80	80
P5	30	35
P6	80	80
P7	30	35
P8	100	100

Ease of gear shifting- Linkage type



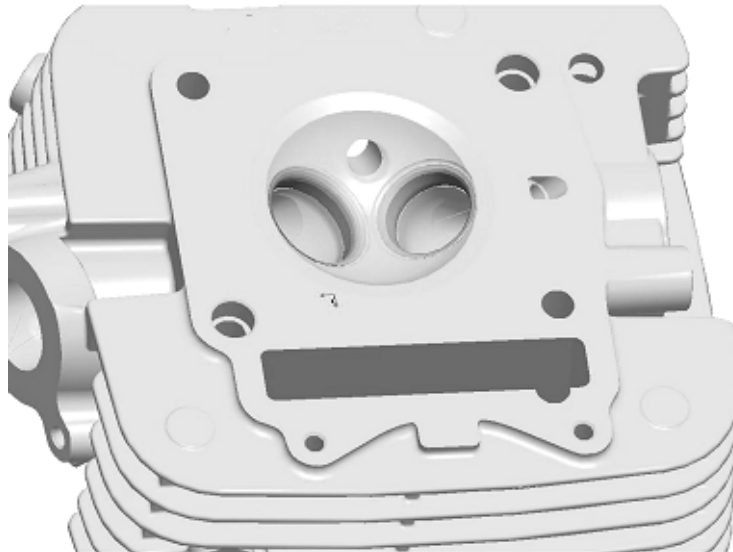
How it works

New modified linkage type gear shifting reduces the effort required for shifting the gear with perfect ergonomic

Benefits to Customer

***Tireless city drive
Adjustable with respect to the ergonomics***

Spherical combustion chamber with angular squish



How it works

Spherical combustion chamber with angular squish makes charge to burn completely, and improves the high speed combustion

Benefits to Customer

Good power delivery and top speed



Apache

RTR 160

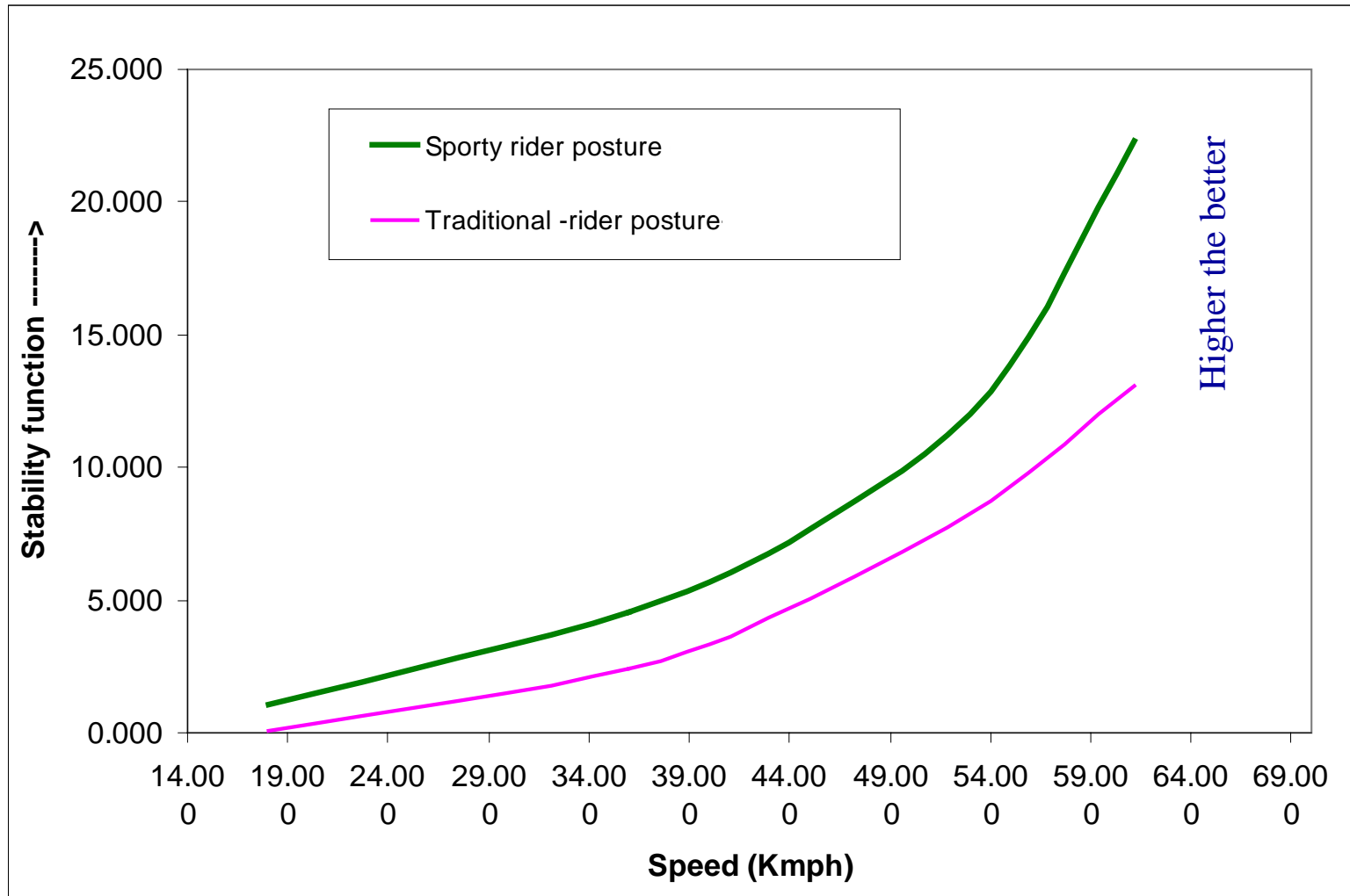
Synchronized Handling

Rock Stability

Key Changes - Apache RTR160

- *Increased wheelbase with synchro stiff chassis*
 - *Tuned for Engine power*
- *Adjustable Handle bar*
 - *Fit for all Indian heights*
 - *Best Ergo – be it City or Highway*
 - *More precise steer control*
- *Sporty Rider posture*
 - *Better Steer control*
 - *Designed for low fatigue*

Stability function of **Apache RTR160** at various speeds





Apache

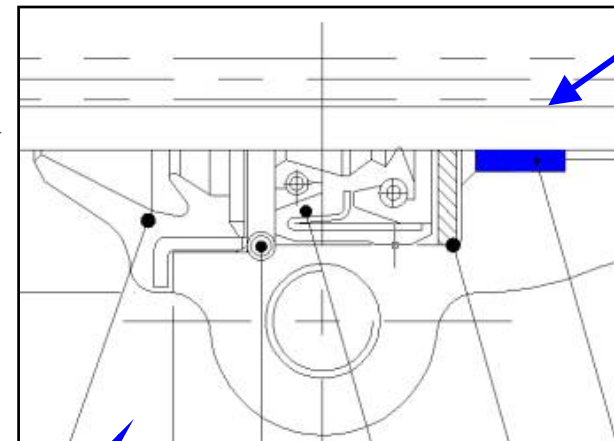
RTR 160

Ride Comfort

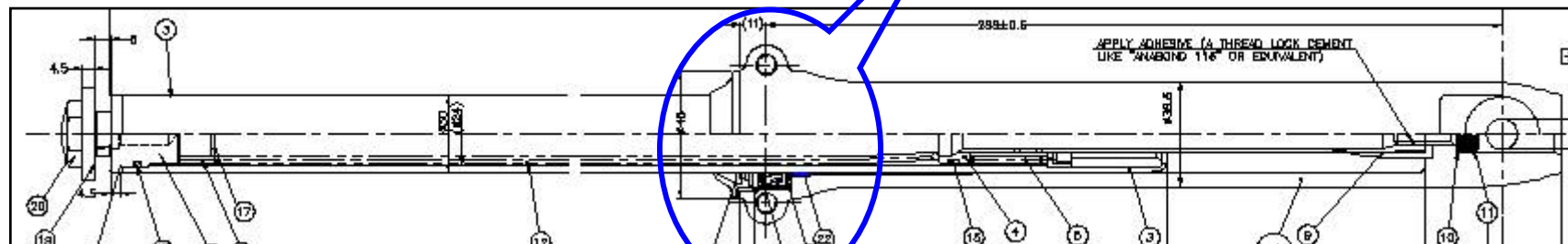
Apache RTR 160 Front fork

- **Low FRICTION**
- **Instantaneous RESPONSE**
- **SMOOTH ride**
- **Enhanced DURABILITY**

Polymer (bimetal) bush

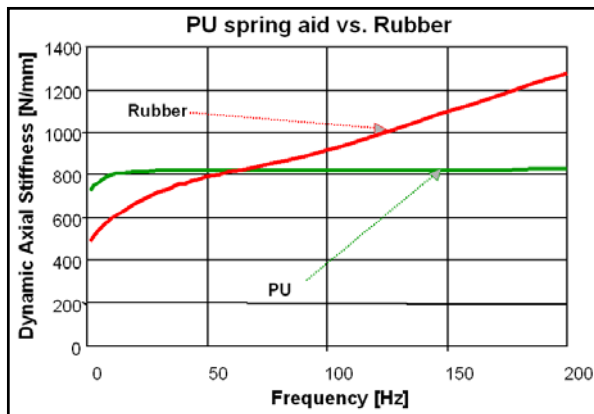
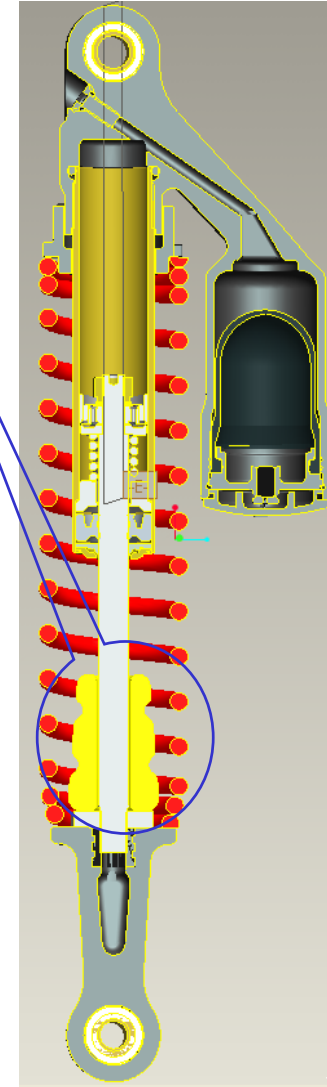
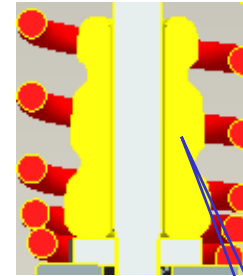


Low friction polymer bush



Apache RTR 160 Canister Shock Absorber

- *High absorption spring-aid*
 - Better **SHOCK** absorption
- *No time delay in energy dissipation*
 - Enhanced **COMFORT**
- *Constant dynamic stiffness*
 - Consistent **RIDE** smoothness



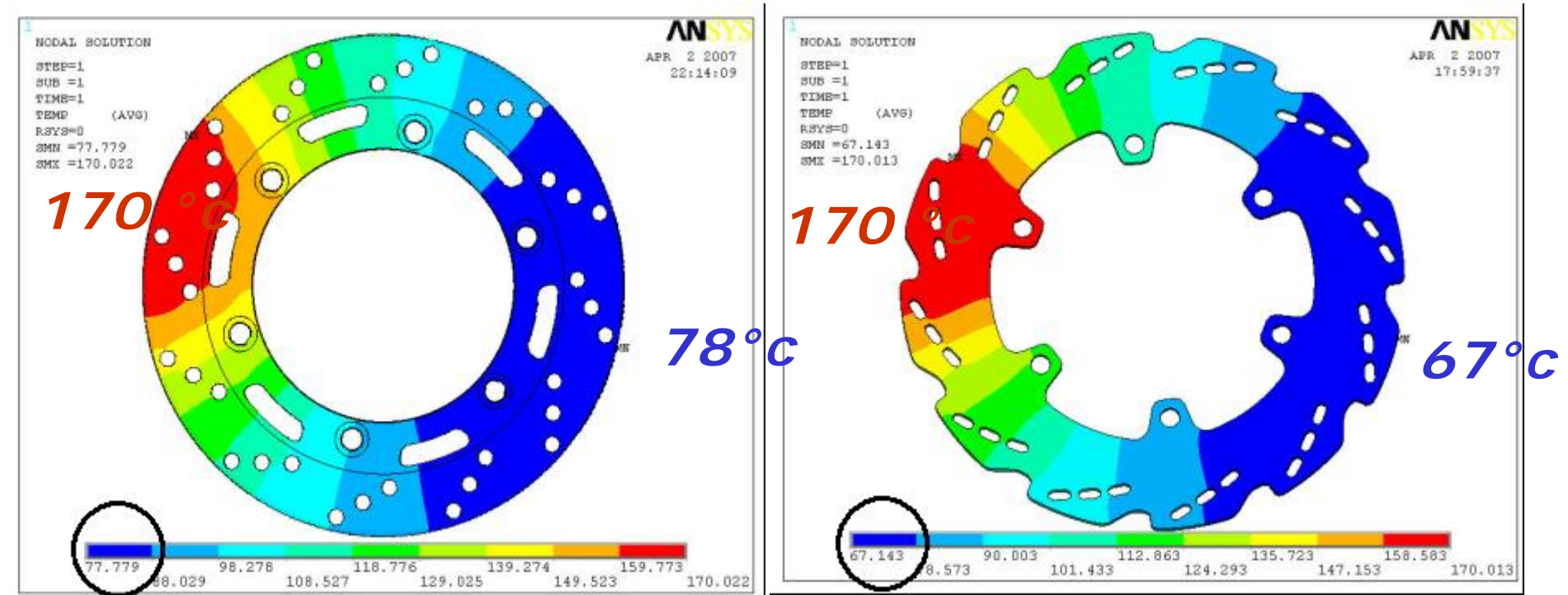


Apache

RTR 160

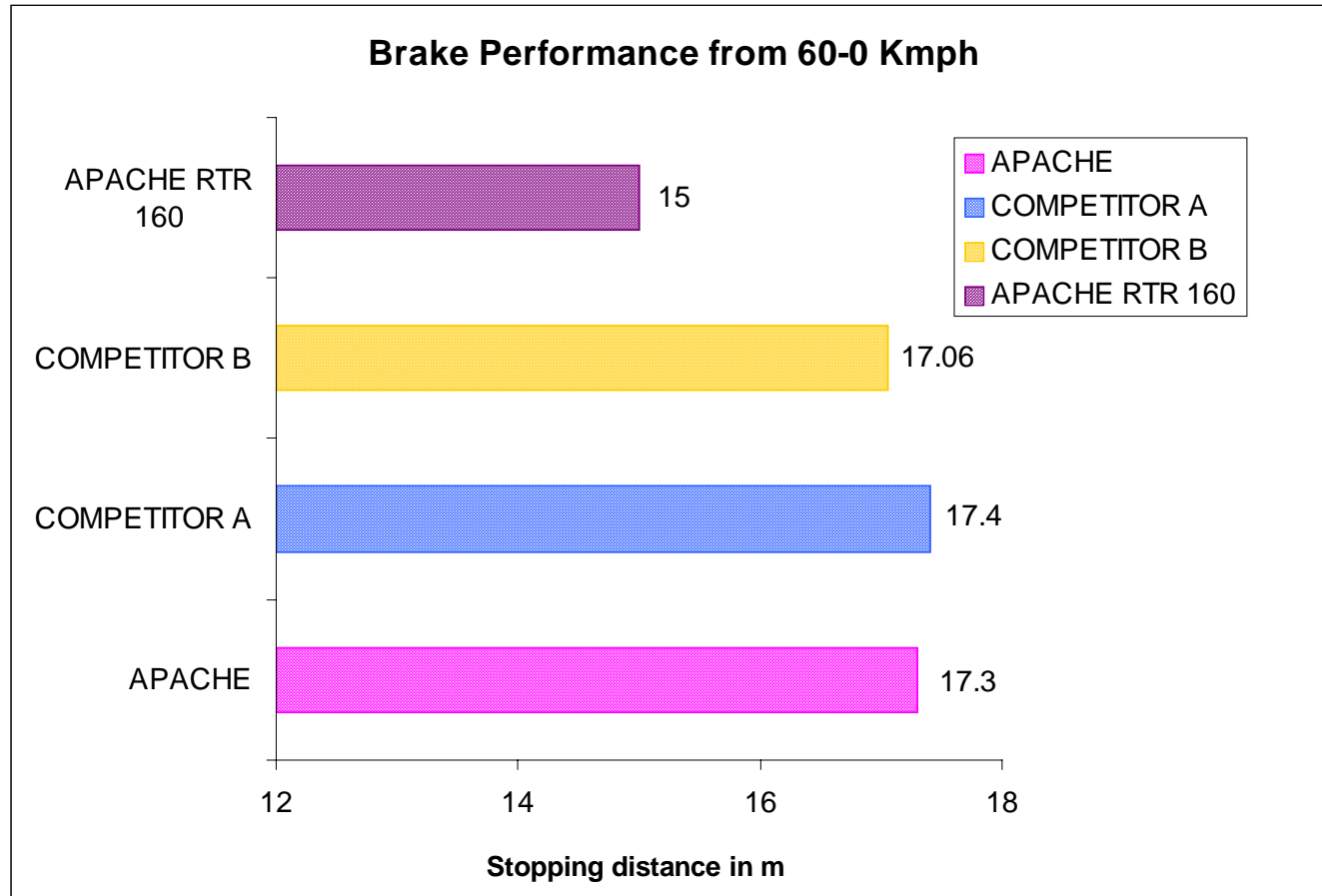
*270 Dia Petal disc for front
brake*

Temperature distribution of disc



- * *Petal disc shows 16% more temperature drop compared to circular under same condition*
- * *For same cooling, petal disc shows lower temperature implying thermally better design*

Vehicle minimum stopping distance from 60 to 0 kmph



- **Average deceleration 0.71 g to 0.94 g**
- **60 kmph to 0 in 1.8 sec.** (Human response time is not included)



Apache RTR-160 Features:

- **160cc, 15.2 bhp Over square engine**
- **Highest power to weight ratio in its class**
- **Max speed 118 kmph.**
- **Powerful sound quality**

- **Mono tube Inverted Gas filled Canister shocks with spring aid.**
- **Sporty ergonomics with an adjustable clip on handle bar**
- **Linkage type forged gear shift lever**



Apache RTR-160 Features:

- **Digital speedometer with clock**
- **Twin LED tail lamp with highest brightness in the class**

- **270 Dia petal disc brake**
- **Sporty forged brake lever**
- **Two piece sporty grab rail**

- **Resilient mounted rider foot rest with sporty aluminium foot pegs**
- **Sporty aluminium foot pegs for pillion rider**



Thank you